

PRO-Clean™

Rapid Protein Residue Test
 Part Number PRO-100 100 Tests

Description/Intended Use

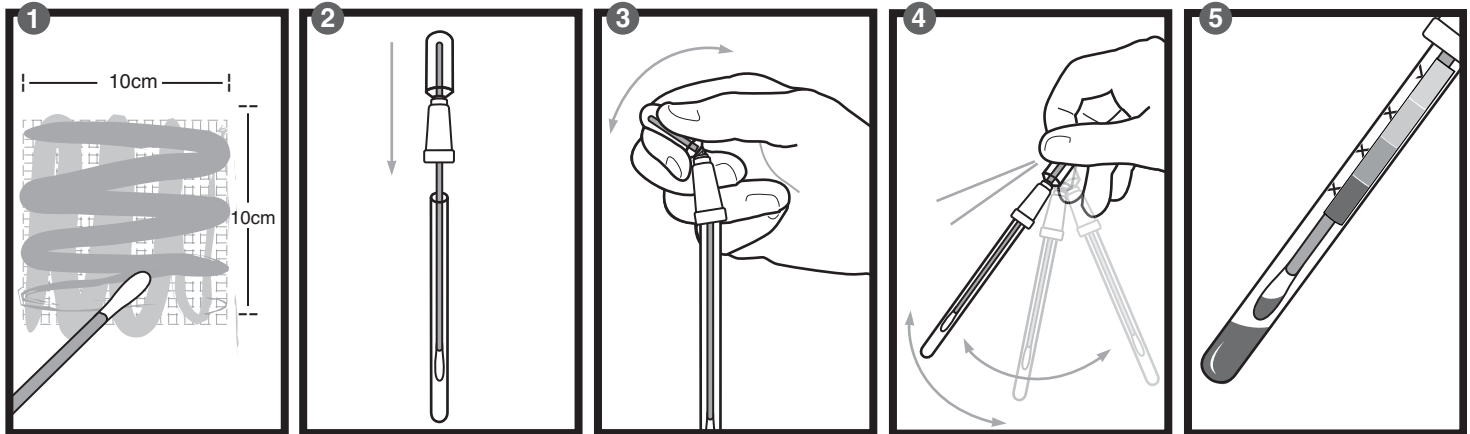
PRO-Clean is a ready-to-use rapid protein* residue detection system for the food and beverage industry or for testing any surface after the cleaning process. PRO-Clean will turn from green to purple if protein is present in the sample. The more protein collected in the sample, the quicker and darker the color change. There is no need to continue timing if the surface is dirty and the color changes to purple before 10 minutes. This test is dependent on time and temperature; therefore, it is important to let the devices reach ambient temperature (15-25° C) before testing. Disregard any color change after 10 minutes.

PRO-Clean is intended to provide rapid validation of hygiene levels of a surface and show due diligence in a HACCP program. It is not intended to be a microbiological monitoring tool; however, it does detect bacteria and mold. (For level of bacteria contamination, contact Hygiena or visit www.hygiena.net). Common sanitizers at normal concentrations do not cause interference or false positives. High concentrations of alkaline sanitizers may cause false-negative results in some cases. Peroxide based disinfectants can cause a false-positive color change reaction. It is best practice to wait for the appropriate time after sanitizing before testing the surface. It is important in any sampling program to establish a consistent and easy-to-replicate sampling procedure.

Sanitation is usually a two-step process involving a detergent cleaning and subsequent (optional) disinfecting step. Collecting the sample after detergent cleaning and rinsing steps, but prior to any terminal disinfection, will ensure the best results. Product residues left on a surface after detergent cleaning reduces the effectiveness of the disinfectant. This is why testing at this point prevents wasted chemicals and time and ensures optimum test performance in a food safety program.

*PRO-Clean will also detect other reducing substances such as simple sugars, tannin and ascorbic acid.

Procedure



1. The swab is premoistened to assist in sample collection. Flick device before removing swab and taking a sample so all moisture solution reaches swab tip. Take a sample by swabbing an area of 10x10 cm or for unusual surfaces swab enough area to collect a good sample. Apply sufficient pressure and rotate swab tip during swabbing to ensure good collection. Take care not to touch swab tip to anything else but surface being tested.
2. Put swab back into swab tube.
3. Activate by bending bulb until Snap Valve™ breaks. Squeeze bulb twice to expel liquid reagent down swab shaft.
4. Bathe swab in reagent by gently shaking for 5 seconds.
5. Wait 10 minutes for color change from green to purple. Most color changes take place in less than 60 seconds. After 10 minutes, compare color of reagent against PRO-Clean color chart swab label and record result.

Storage

2-25° C for a 12-month shelf life; 26-35° C for a maximum of 2 weeks. Do not freeze.

Interpreting the Results

The color of the solution and the time in which the color change takes place will indicate the level of protein residues on the surface. By comparing the color of the solution against the PRO-Clean label, an estimation of the surface cleanliness can be made.

- Green ▶ Pass result = Clean, no further action required
- Grey ▶ Caution, small amount of residue present = Retest, rinse or reclean depending on protocol
- Purple ▶ Fail result = Reclean and retest

Safety Information

The components of PRO-Clean do not pose any risk to health when used in accordance with standard laboratory practices. Avoid contact with eyes, skin and clothing. Reagent may cause eye irritation if it comes into contact with eyes. In case of contact with eyes, immediately flush eyes with water for at least 15 minutes. In case of contact with skin, flush immediately with plenty of water. If irritation persists, get medical attention. If swallowed, wash out mouth with water and seek medical advice. Keep out of reach of children. Dispose of swab devices via normal routes.

Contact information

If more information is required, please visit us at www.hygiena.net or contact us at:

Hygiena — Americas
 941 Avenida Acaso
 Camarillo, CA., 93102
 USA

Phone: 001 1-805-388-8007
 Fax: 001 1-805-388-5531
 Email: enquiries@hygiena.net

Hygiena — International
 Unit 11, WENTA Business Centre
 Colne Way, Watford, Hertfordshire
 WD24 7ND, UK

Phone: ++44 (0)1923 818821
 Fax: ++44 (0)1923 818825
 Email: enquiries@hygiena.net