

BAX® System

PCR Assay for Genus *Listeria*

The BAX® System PCR assay for Genus *Listeria* aids companies monitoring their environment and products for contamination with *Listeria*, a common indicator organism for other pathogens. This assay is validated for a wide variety of food and product matrices, as well as environmental samples and offers flexible enrichment choices that provide results as soon as next-day.



Features & Benefits:

- Clear yes-or-no results in as little as 30 hours for select food and environmental samples
- Carefully designed primers target specific genetic sequences possessed only by the target organisms
- Minimal components and simplified workflows to maximize efficiency and ease-of-use
- Compatible with many other BAX® System assays for efficient processing
- Validated to perform as well or better than standard reference methods for listed product types
- Internal controls included with every test to validate results even in absence of target
- Flexible protocols available to meet your unique workflows



Validations, Certifications and Approvals:

- **AOAC Research Institute**
Performance Tested MethodSM #030502
Validated on frankfurters, smoked salmon, spinach and other vegetables, cheese, environmental sponges, environmental swabs, environmental surfaces
- **Health Canada #MFLP-15**
Validated on environmental sponges and swabs

keydiagnostics

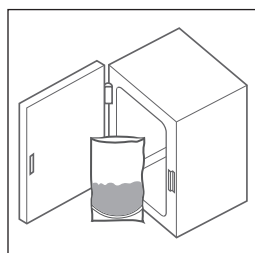
T: 02 8212 4074 F: 02 9423 6992
info@keydiagnostics.com.au
www.keydiagnostics.com.au
PO Box 1038, Gympie, NSW, 2227

Hygiena Product Code	Legacy Order Code	Description	Quantity
KIT2016	D11000147	BAX® System PCR Assay for Genus <i>Listeria</i>	96 tests per kit

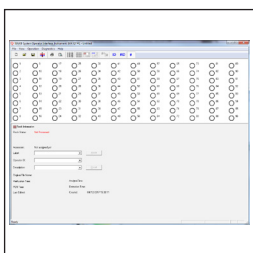


Find support documents, instructional videos, and more at **www.hygiena.com**

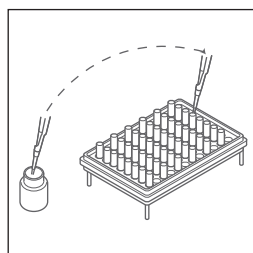
BAX® System Protocol



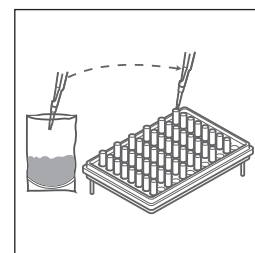
Enrich Samples.



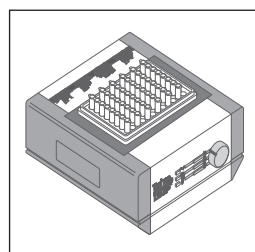
Create rack file and warm up cyclor.



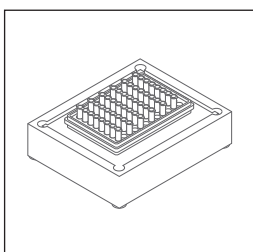
Mix protease with lysis buffer and transfer 200 µL of mixture to cluster tubes.



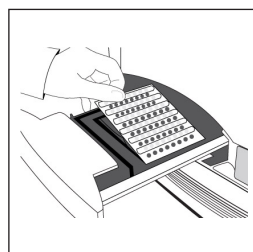
Transfer 5 µL sample enrichment to cluster tubes.



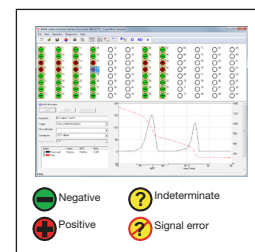
Place samples on automated thermal block for lysis and cooling.



Transfer 50 µL of lysed sample to PCR tubes in cooling block.



Place sealed PCR tubes in cyclor and immediately click "NEXT" to run program.



Review results.

Related Products

BAX® System PCR Assay for *Salmonella* 2

A second-generation version containing all the benefits of the original *Salmonella* assay, plus hot-start technology to minimize effects of human error.

BAX® System Real-Time PCR Assay for *Salmonella*

Uses real-time PCR technology to reduce processing time to about one hour, helping food companies make product release decisions with speed and confidence.

BAX® System *Listeria* Enrichment Media

Provides nutrients and stable pH conditions to improve recover of *Listeria* cells from sponges and swabs used to sample food contact surfaces and other environmental areas.

Hygiena Product Code	Legacy Order Code	Description	Quantity
KIT2011	D14368501	BAX® System PCR Assay for <i>Salmonella</i> 2	96 tests per kit
KIT2006	D14306040	BAX® System Real-Time PCR Assay for <i>Salmonella</i>	96 tests per kit
MED2002	D12232794	BAX® System <i>Listeria</i> Enrichment Media	2.5 kg tub



Find support documents, instructional videos, and more at www.hygiena.com/bax