

BAX® System

Real-Time PCR Assay for *Campylobacter jejuni/coli/lari*

Since *Campylobacter* is one of the most prevalent foodborne pathogens out there, rapid and reliable *Campylobacter* detection in poultry and other food products has become more important than ever. Traditional methods can be labor intensive, time consuming, and prone to user error. Now, use the power of DNA to detect these bacteria with certainty; the BAX® System Real-Time PCR Assay for *Campylobacter jejuni/coli/lari* accurately and rapidly detects these pathogens with minimal operator handling, easy to follow procedures, and intuitive result interpretation.



Features & Benefits:

- Clear yes-or-no results in as little as 3 hours for highly contaminated samples; 27 hours for enriched matrices
- Adopted by the United States Department of Agriculture Food Safety and Inspection Service (USDA FSIS) for screening poultry rinses, sponges, and raw product samples for the presence of *Campylobacter jejuni/coli/lari*
- Multiplex technology generates a positive result if any one of three pathogenic *Campylobacter* present (*coli*, *jejuni*, *lari*)
- Validated to perform as well or better than standard reference methods for listed product types
- Minimal components and simplified workflows to maximize efficiency and ease-of-use
- Compatible with many other BAX® System assays for efficient processing
- Internal controls included in every test to validate results even in absence of target

Validations, Certifications and Adoptions:

- **AOAC Research Institute**
Performance Tested MethodSM #040702
Validated on poultry carcass rinses and processed turkey
- **NordVal #39**
Validated on chicken cloacae swabs
- **USDA-FSIS MLG 41A.00** for screening *Campylobacter* in poultry rinses, sponge and raw product samples

keydiagnostics

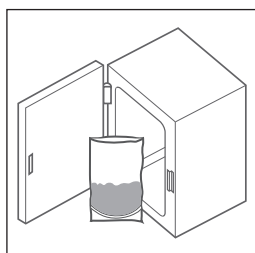
T: 02 8212 4074 F: 02 9423 6992
info@keydiagnostics.com.au
www.keydiagnostics.com.au
PO Box 1038, Gympie, NSW, 2227

Hygiena Product Code	Legacy Order Code	Description	Quantity
KIT2018	D12683449	BAX® System Real-Time PCR Assay for <i>Campylobacter</i>	96 tests per kit

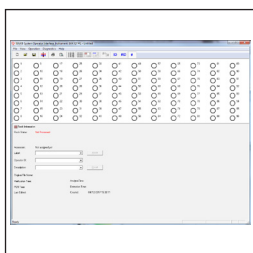


Find support documents, instructional videos, and more at **www.hygiena.com**

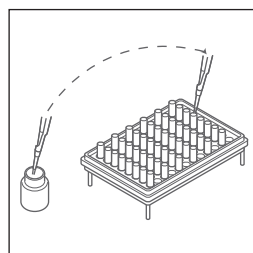
BAX® System Protocol



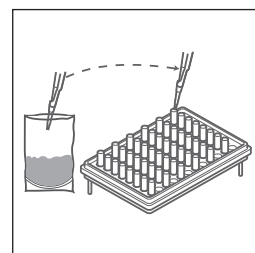
Enrich Samples.



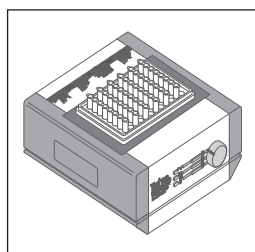
Create rack file and warm up cyclometer.



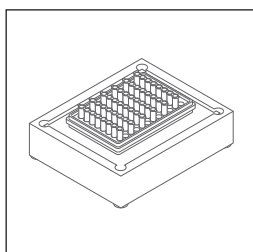
Mix protease with lysis buffer and transfer 200uL of mixture to cluster tubes.



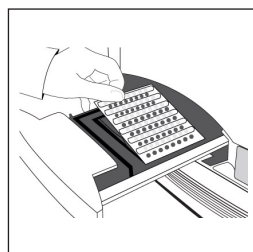
Transfer 5 µL sample to cluster tubes.



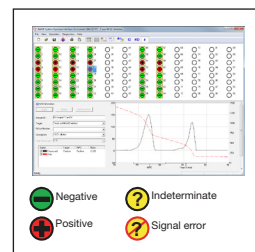
Place samples on automated thermal block for lysis and cooling.



Transfer 30 µL of lysed sample to PCR tubes in cooling block.



Place sealed PCR tubes in cyclometer and immediately click "NEXT" to run program.



Review results.

Related Products

BAX® System PCR Assay for *Salmonella* 2

A second-generation version containing all the benefits of the original *Salmonella* assay, plus hot-start technology to minimize effects of human error.

BAX® System Real-Time PCR Assay for *Salmonella*

Uses real-time PCR technology to reduce processing time to about one hour, helping food companies make product release decisions with speed and confidence.

Hygiena Product Code	Legacy Order Code	Description	Quantity
KIT2011	D14368501	BAX® System PCR Assay for <i>Salmonella</i> 2	96 tests per kit
KIT2006	D14306040	BAX® System Real-Time PCR Assay for <i>Salmonella</i>	96 tests per kit



Find support documents, instructional videos, and more at www.hygiena.com